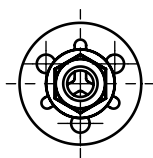
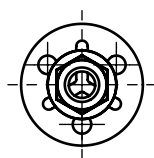


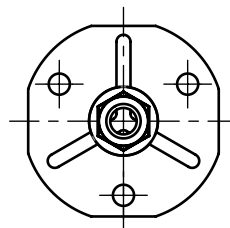
Application: fiberglass, composite materials and other.
Assembly: bonding, lamination, moulding.



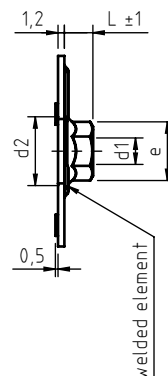
Y2000=φ20



Y2300=φ23



Y3800=φ38



code	thread d1	hex key	e	d2	L
DFC04Y2000040. _	M 4	7	7,8	9,1	4,3
DFC04Y2300040. _					
DFC04Y3800040. _					
DFC05Y2000050. _	M 5	8	8,9	10,5	4,8
DFC05Y2300050. _					
DFC05Y3800050. _					
DFC06Y2000060. _	M 6	10	11,1	12,95	5,4
DFC06Y2300060. _					
DFC06Y3800060. _					

Non binding dimensions, expressed in mm.

Standard
 On demand
 Not manufactured

Material: steel _____,12, stainless steel AISI 316 _____,56

Finishing: steel nut: zinc coated
stainless steel nut AISI 316: electropolished

Tolerance: where not specified, coarse degree of accuracy,
according to ISO 2768-m

Thread: metric ISO 6 H

Example of designation: flanged threaded nut with Y2000 round blind plate, M5 thread, 4,8 mm length, zinc plated steel:

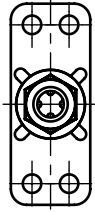


DFC05Y2000050.12

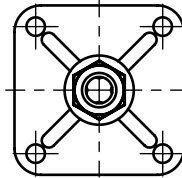
Headquarter and Export department:
Via Montfalcone 144 - 10136 - Turin - IT - Tel. +39.011.700301 - Fax +39.011.702947
Milan branch:
Via E. Cialdini 37 - 20161 - Milan - IT - Tel. +39.02.646.8476 - Fax +39.02.662.00275
Production and purchase departments:
Via E. Pavanello 1 - 30030 - Maerne di Martellago (Venice) - IT - Tel. +39.041.503.0100
Fax +39.041.503.0110

SPECIALINSERT® COMMITS ITSELF TO CONTINUOUSLY IMPROVE ITS PRODUCTS. IT RESERVES THE RIGHT TO CHANGE THEIR TECHNICAL AND STRUCTURAL CHARACTERISTICS WITHOUT PRIOR NOTICE. ALL RIGHTS ARE RESERVED AND THE DUPLICATE, EVEN PARTIAL OF THESE DOCUMENTS, AS WELL AS ITS DISTRIBUTION TO THIRD PARTIES ARE FORBIDDEN, UNLESS OTHERWISE AND EXPRESSLY AUTHORIZED BY SPECIALINSERT.

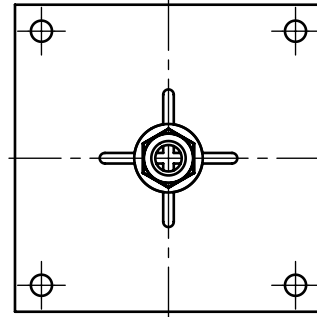
Application: fiberglass, composite materials and other.
Assembly: bonding, lamination, moulding.



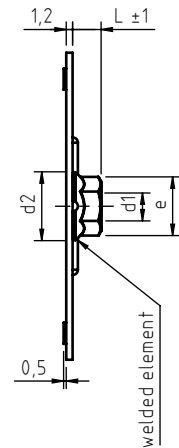
Y3815=38x15



Y3232=32x32



Y5858=58x58

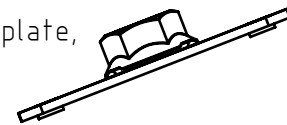


code	thread d1	hex key	e	d2	L
DFC04 Y3815040. _	M 4	7	7,8	9,1	4,3
DFC04 Y3232040. _					
DFC04 Y5858040. _					
DFC05 Y3815050. _	M 5	8	8,9	10,5	4,8
DFC05 Y3232050. _					
DFC05 Y5858050. _					
DFC06 Y3815060. _	M 6	10	11,1	12,95	5,4
DFC06 Y3232060. _					
DFC06 Y5858060. _					

Non binding dimensions, expressed in mm.

Standard
 On demand
 Not manufactured

Material: steel _____,12, stainless steel AISI 316 _____,56
 Finishing: steel nut: zinc coated
 stainless steel nut AISI 316: electropolished
 Tolerance: where not specified, coarse degree of accuracy,
 according to ISO 2768-m
 Thread: metric ISO 6 H
 Example of designation: flanged threaded nut with Y3815 rectangular blind plate,
 M5 thread, 4,8 mm height, zinc plated steel:



DFC05Y3815050.12