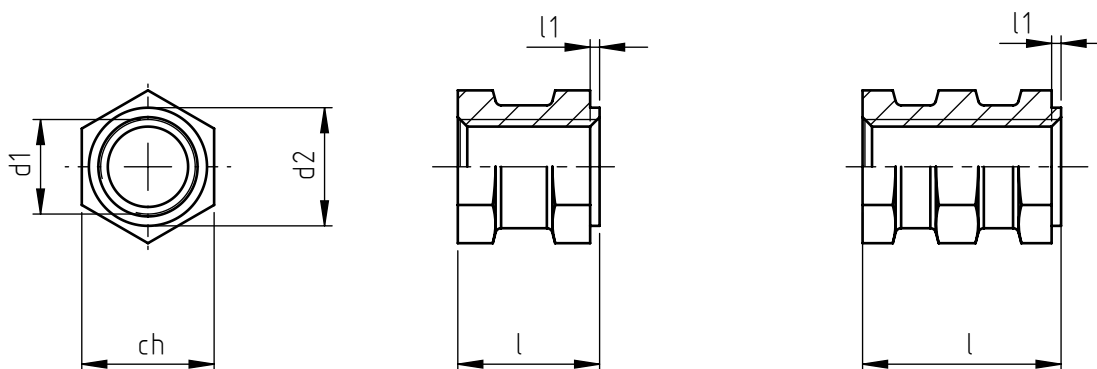


Application: thermoplastic materials and thermosetting materials.  
 Assembly: overmoulding.

type 1  
 standard DIN 16903

type 2



code	metric thread d1	ch	total length l	d2	l1	type
ES M3 H04.5	M3	5	4,5	4	1	1
ES M3 H06	M3	5	6	4	1	2
ES M4 H06	M4	6	6	5,5	1	1
ES M4 H08	M4	6	8	5,5	1	2
ES M5 H07.5	M5	7	7,5	7	1	1
ES M5 H10	M5	7	10	7	1	2
ES M6 H09	M6	9	9	8	1	1
ES M6 H12	M6	9	12	8	1	2
ES M8 H12	M8	11	12	10	1	1
ES M8 H16	M8	11	16	10	1	2
ES M10 H15	M10	14	15	12,5	1	1
ES M10 H20	M10	14	20	12,5	1	2

Non binding dimensions, expressed in mm.



Standard



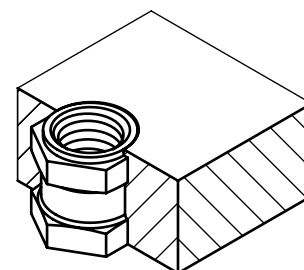
On demand



Not manufactured

Material: brass  
 Finishing: natural  
 Tolerances: ISO 2768-m  
 Threading: ISO 6 H metric  
 Example: hexagonal bush,  
 M 6 thread, lenght 12 mm,  
 brass:

ES M 6 H12



SPECIALINSERT<sup>®</sup> COMMITS ITSELF TO CONTINUOUSLY IMPROVE ITS PRODUCTS. IT RESERVES THE RIGHT TO CHANGE THEIR TECHNICAL AND STRUCTURAL CHARACTERISTICS WITHOUT PRIOR NOTICE. ALL RIGHTS ARE RESERVED AND THE DUPLICATE, EVEN PARTIAL, OF THESE DOCUMENTS, AS WELL AS ITS DISTRIBUTION TO THIRD PARTIES, ARE FORBIDDEN, UNLESS OTHERWISE AND EXPRESSLY AUTHORIZED BY SPECIALINSERT.