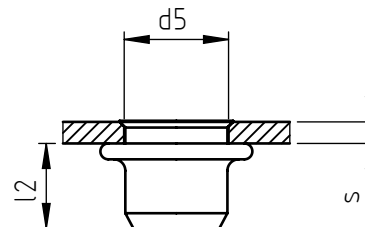
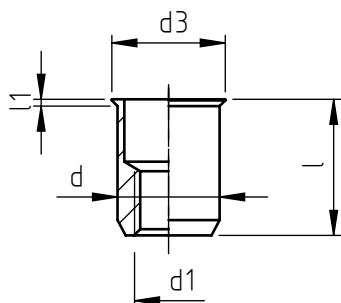


Application: on boxed and tubular sections, on sheet-metal and non-metal sheets.
Assembly: by specific manual or pneumatic tools.



code	steel	steel	stainless steel	s grip	l	d1 6H	d	d3	l1 ~	d5 +0,15 0	l2 *
TFM/C M 5/_	8	--	X	0,5 ÷ 2,0	9,5	M 5	7	8	0,6	7	5,5
TFM/C M 6/_	8		X	0,5 ÷ 2,5	13,5	M 6	9	10	0,6	9	7,5
		8S			12,0						
TFM/C M 8/_	8		--	0,5 ÷ 2,0	13,5	M 8	11	12	0,6	11	8
		8S			13,0						

Non binding dimensions, expressed in mm.

* Dimension measured on average thickness. Variable according to "s" dimension.

Standard
 On demand
 -- Not manufactured

Material: steel nr.1.0718
 steel nr.1.0303
 stainless steel nr.1.4305

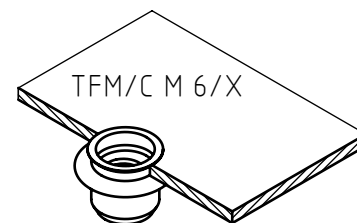
Finishing: steel: zinc-plated
 stainless steel: natural

Tolerances: according to UNI standards EN 22768-1

Thread: ISO 6 H metric

Example: threaded tubular short rivet nut with
 flush head, stainless steel,
 grip 2,0 mm, M 6 thread:
 TFM/C M 6/X

_____ / ____ / 8
 _____ / ____ / 8S
 _____ / ____ / X



SPECIALINSERT® COMMITS ITSELF TO CONTINUOUSLY IMPROVE ITS PRODUCTS. IT RESERVES THE RIGHT TO CHANGE THEIR TECHNICAL AND STRUCTURAL CHARACTERISTICS WITHOUT PRIOR NOTICE. ALL RIGHTS ARE RESERVED AND THE DUPLICATE, EVEN PARTIAL, OF THESE DOCUMENTS, AS WELL AS ITS DISTRIBUTION TO THIRD PARTIES, ARE FORBIDDEN, UNLESS OTHERWISE AND EXPRESSLY AUTHORIZED BY SPECIALINSERT.