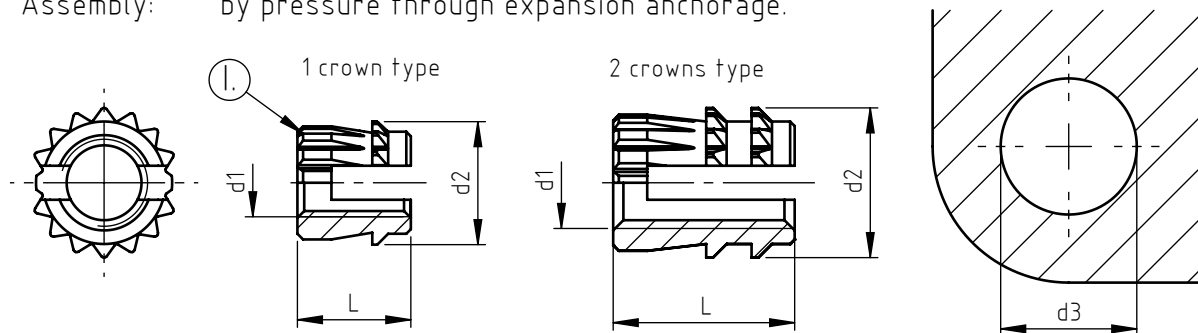


Applications: on thermoplastic materials.
 Assembly: by pressure through expansion anchorage.



code	metric thread d1	crown diameter d2	total length L	number of crowns n°	hole diameter * d3
M. 2 C.03,5	M 2	4	3,5	1	3,2
M. 2,5 C.04	M 2,5	4,5	4	1	3,5
M. 3 C.04	M 3	5,6	4	1	4,7
M. 3 C.05			5	1	
M. 3 E.08			8	2	
M. 3 D.09,5			9,5	2	
M. 3,5 C.05	M 3,5	6	5	1	5,1
M. 3,5 E.08			8	2	
M. 3,5 D.09,5			9,5	2	
M. 4 C.05	M 4	6,6	5	1	5,6
M. 4 E.08			8	2	
M. 4 D.09,5			9,5	2	
M. 5 C.06	M 5	7,6	6	1	6,8
M. 5 D.09			9	2	
M. 6 C.07	M 6	8,6	7	1	7,7
M. 6 D.09			9	2	
M. 8 D.10	M 8	10,6	10	2	9,6

Non binding dimensions, expressed in mm.

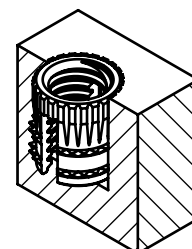
The upper bevel angle is not usually provided for M2 and M2,5.

*Use screws of suitable length in order to make use of the whole thread of the bush during assembly' phase.

In order to use correctly the products, we suggest to carry out some preliminary assembly tests to determine the right hole diameter as it varies according to the receiving material.

Standard On demand Not manufactured

Material: brass
 Finishing: natural
 Tolerances: ISO 2768 - m
 d1 thread: ISO 6H
 Example: brass threaded insert-plast insert, 9mm length,
 M5 thread: M. 5 D.09



Headquarter and Export department:
 Via Montalcone 144 - 10136 - Torino - IT - Tel. +39.011.700301 - Fax +39.011.702947
 Milan branch:
 Via E. Cialdini 37 - 20126 - Milano - IT - Tel. +39.02.646.8476 - Fax +39.02.662.00275
 Production and purchase departments:
 Via E. Pavanello 1 - 30030 - Maerne di Martellago (Venezia) - IT - Tel. +39.041.503.0100
 Fax +39.041.503.0110