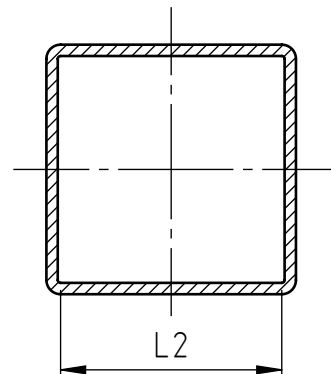
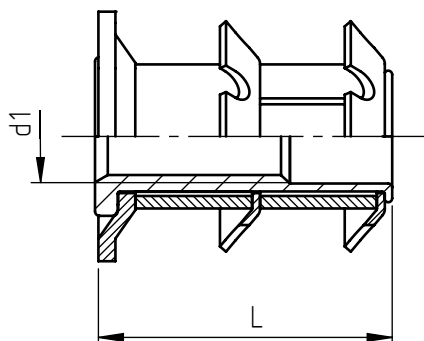
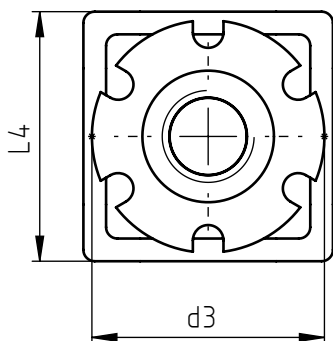


Application: at the end of square metallic and non-metallic tubes.  
 Assembly: by pressure.



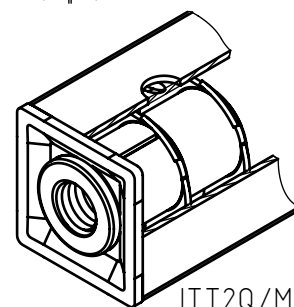
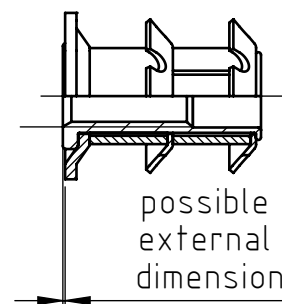
codice	d1	L2*	d3	L	L4
ITT2Q/M 8/15.7	M 8	15,7 ÷ 17,1	18,1	26	19
ITT2Q/M 8/18.9		18,9 ÷ 20,2	20,9		22
ITT2Q/M 8/22.1		22,1 ÷ 23,4	24,7		25
ITT2Q/M 8/25.3		25,3 ÷ 26,6	27,5		28
ITT2Q/M 8/26.6		26,6 ÷ 27,6	28,9		30
ITT2Q/M 8/28.4		28,4 ÷ 29,8	30,7		32
ITT2Q/M 8/34.8		34,8 ÷ 36,1	37,9		38
ITT2Q/M 8/47.5		47,5 ÷ 48,8	50		50
ITT2Q/M10/22.1	M10	22,1 ÷ 23,4	24,7	26	25
ITT2Q/M10/26.6		26,6 ÷ 27,6	28,8		30
ITT2Q/M10/34.8		34,8 ÷ 36,1	37,9		38
ITT2Q/M10/47.5		47,5 ÷ 48,8	50		50

Dimensions and images are not binding, expressed in mm.

Standard     
  On demand     
  Not manufactured

Material: steel  
 Example: 2 crowns flange insert  
 for square tubes, M 8 thread,  
 tube internal dimension 23x23 mm:  
 ITT2Q/M 8/22,1

\* For product definition, it is advisable to carry out assembly tests. For correct use, it is advisable to insert a locknut to secure the pin. The head of the threaded bush may protrude from the flange, reinforced for technical necessity, varying the length L. Products with a flange are designed for use with feet or castors. The system is not suitable for structural loads. Following the insertion of the Crown-Nut, do avoid heat treatment, galvanic or other heating operations that could compromise the product's characteristics. The possible presence of cracks, due to the manufacturing process of deformation of the threaded assembly bush, is not to be considered as a defect and does not compromise the functionality of the Crown-Nut once installed.



ITT2Q/M 8/22,1