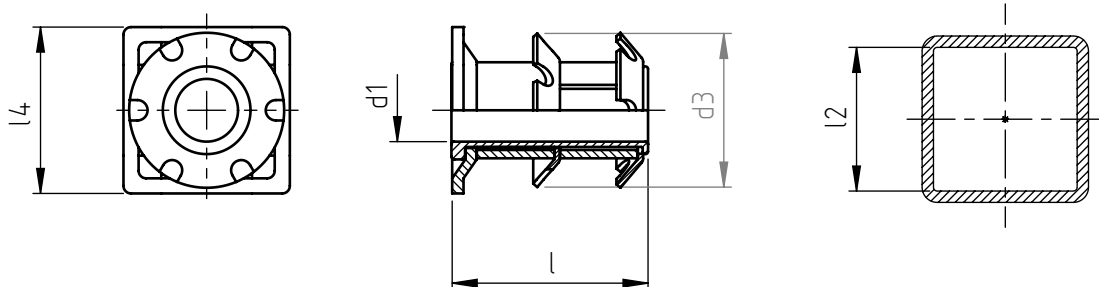


Application: at the end of square metallic and non-metallic tubes.
Assembly: by pressure.

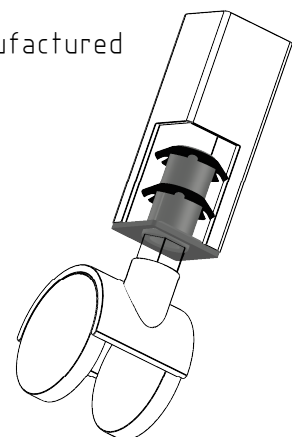


code	d1	l2 *	d3	l	l4
ITT2Q/D11.3/18.9	11,3	18,9 ÷ 20,2	21	38,1	22
ITT2Q/D11.3/22.1		22,1 ÷ 23,4	24,6		25
ITT2Q/D11.3/25.3		25,3 ÷ 26,6	27,6		28
ITT2Q/D11.3/26.4		26,4 ÷ 27,8	28,8		30
ITT2Q/D11.3/28.4		28,4 ÷ 29,8	30,6		32
ITT2Q/D11.3/34.8		34,8 ÷ 36,1	37		38
ITT2Q/D11.3/41.4		41,4 ÷ 42,4	43,5		45
ITT2Q/D11.3/47.5		47,5 ÷ 48,8	50		50

Dimensions and images are not binding, expressed in mm.

Standard
 On demand
 Not manufactured

Material: steel
Example: 2 crowns flange insert for square tubes,
quick press-in socket for wheels,
tube internal dimension 23x23 mm
ITT2Q/D11.3/22.1



*It is advisable to carry out some preliminary assembling tests in order to determine the best product. After the insertion of the Crown-Nut do avoid heat treatments, galvanization and other heating operations that might compromise the characteristics of the product. The possible presence of cracks due to the deformation's production process of the threaded assembly bush, are not to be considered defective and do not compromise the functionality of the Crown-nut installed.