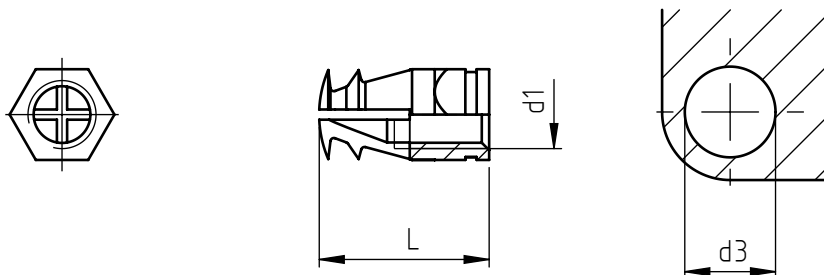


Applications: wood and derivatives.
 Assembly: by pressure through expansion anchorage.



notes	code	metric thread	total length	hole diameter	minimum hole depth	minimum panel thickness
		d1	L	d3		
-	M 04 TE 55	M 4	5,5	5,5	5,5	7
-	M 04 TE 75		7,5		7,5	9
(1)	M 04 TE 100		10		12	15
-	M 05 TE 70	M 5	7	6	7	9
(1)	M 05 TE 110		11		14	16
-	M 06 TE 90	M 6	9	8	9	11
(1)	M 06 TE 120		12		15	17
(1)	M 06 TE 150		15		18	20
-	M 08 TE 130	M 8	13	10	13	15
(2)	M 08 TE 200		20		23	25

(1) Inserts with one nylon ball available on demand
 (2) available with one nylon ball only

The dimensions and images are indicative, not binding, the values are expressed in mm.

For a correct usage of the product it is advisable to carry out some preliminary assembling tests to determine the correct hole diameter.

 Standard

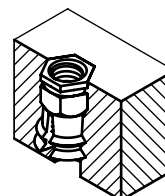
 Until stock lasts

Material: brass

Finishing: natural, (nichel plated on request only for the type without the nylon ball code M__TE__ /NK)

Tolerances: where not specified, coarse degree of accuracy, according to ISO 2768-m

Example: "expand-nut" brass expansion threaded insert,
 M5 thread, L = 7 mm:
 M 05 TE 70



SPECIALINSERT® COMMITS ITSELF TO CONTINUOUSLY IMPROVE ITS PRODUCTS. IT RESERVES THE RIGHT TO CHANGE THEIR TECHNICAL AND STRUCTURAL CHARACTERISTICS WITHOUT PRIOR NOTICE. ALL RIGHTS ARE RESERVED AND THE DUPLICATION, EVEN PARTIAL, OF THESE DOCUMENTS, AS WELL AS ITS DISTRIBUTION TO THIRD PARTIES, ARE FORBIDDEN, UNLESS OTHERWISE AND EXPRESSLY AUTHORIZED BY SPECIALINSERT.