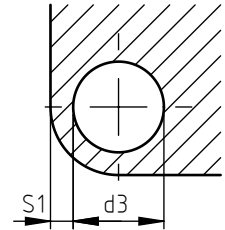
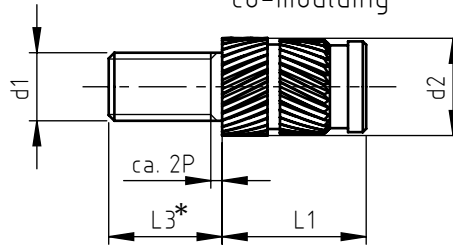
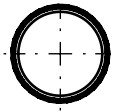


Applications:
on thermoplastic materials
on thermosetting materials

Assembly:
ultrasonic, heat, co-moulding,
co-moulding

866



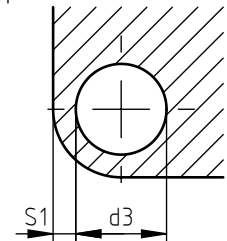
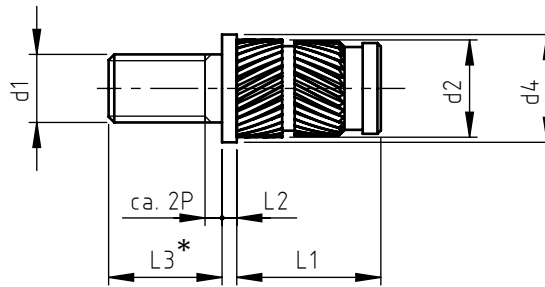
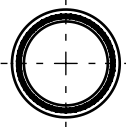
code	metric thread d1	external diameter d2	anchorage dimension L1	hole diameter d3	minimum wall thickness S1
866 0030.8	M 3	4,6	5,8	4,0÷4,1	2,3
866 0035.8	M 3,5	5,4	7,2	4,8÷4,9	2,5
866 0040.8	M 4	6,3	8,2	5,6÷5,7	2,5
866 0050.8	M 5	7,0	9,5	6,4÷6,5	2,7
866 0060.8	M 6	8,6	12,7	8,0÷8,1	3,0
866 0080.8	M 8	10,2	12,7	9,6÷9,7	3,5

Table 1: available stud length

code (final digit)	stud length L3	availability	
		M 3 M 3,5 M 4	M 5 M 6 M 8
_____2	6	X	X
_____4	10	X	X
_____6	16	X	X
_____8	25	X	X

Thread length $L4 = L3 - 2P$
P = thread pitch

867



*Stud length L3
see table 1.

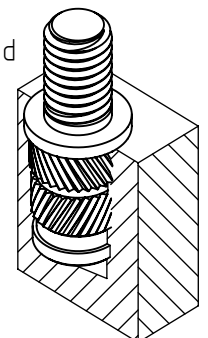
code	metric thread d1	external diameter d2	head diameter d4	head thickness L2	anchorage dimension L1	hole diameter d3	minimum wall thickness S1
867 0030.8	M 3	4,6	5,6	0,6	5,8	4,0÷4,1	2,3
867 0035.8	M 3,5	5,4	6,4	0,8	7,2	4,8÷4,9	2,5
867 0040.81	M 4	6,3	7,2	0,8	8,2	5,6÷5,7	2,5
867 0050.81	M 5	7,0	8,0	1,0	9,5	6,4÷6,5	2,7
867 0060.81	M 6	8,6	9,5	1,3	12,7	8,0÷8,1	3,0
867 0080.8	M 8	10,2	11,0	1,3	12,7	9,6÷9,7	3,5

Non binding dimensions, expressed in mm.

For a correct usage of the product it is advisable to carry out some preliminary assembling tests to determine the correct hole diameter.

■ Standard □ On demand - - - Not manufactured

Material: brass _____ .8
brass with lead content max 0,2% _____ .81
Finishing: natural
Tolerances: ISO 2768 - m
d1 thread: ISO 6g
Example: threaded stud S-Lok brass with head, 16mm stud length,
M5 thread: 867 0050.86



SPECIALINSERT® COMMITS ITSELF TO CONTINUOUSLY IMPROVE ITS PRODUCTS. IT RESERVES THE RIGHT TO CHANGE THEIR TECHNICAL AND STRUCTURAL CHARACTERISTICS WITHOUT PRIOR NOTICE. ALL RIGHTS ARE RESERVED AND THE DUPLICATION, EVEN PARTIAL, OF THESE DOCUMENTS, AS WELL AS ITS DISTRIBUTION TO THIRD PARTIES ARE FORBIDDEN, UNLESS OTHERWISE AND EXPRESSLY AUTHORIZED BY SPECIALINSERT.