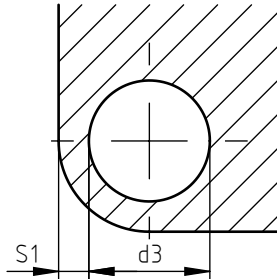
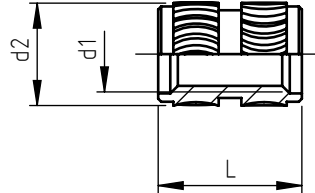
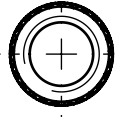


Applications:
on thermoplastic materials
on thermosetting materials
Suitable for automatic assembly.

Assembly:
ultrasonic, heat, co-moulding.
co-moulding.

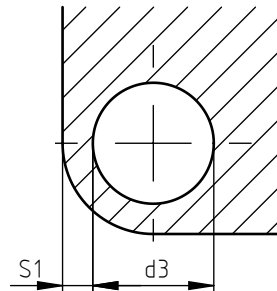
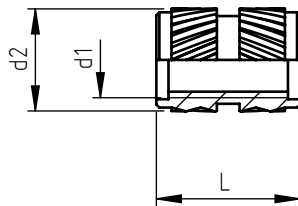
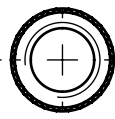
863



code	metric thread d1	external diameter d2	total length L	hole diameter d3	minimum wall thickness S1
863 0030.80	M 3	4,4	5,8	4,0	1,8
863 0040.80	M 4	6,0	8,2	5,6	2,5
863 0050.80	M 5	6,8	9,5	6,4	3,0
863 0060.80	M 6	8,4	12,7	8,0	3,5

The use of S-Lok 863 is particularly suggested for polycarbonates or plastic materials subject to cracks.

864



code	metric thread d1	external diameter d2	total length L	hole diameter d3	minimum wall thickness S1
864 0030.80	M 3	4,6	5,8	4,0	1,8
864 0040.80	M 4	6,3	8,2	5,6	2,5
864 0050.80	M 5	7,0	9,5	6,4	3,0
864 0060.80	M 6	8,6	12,7	8,0	3,5
864 0080.80	M 8	10,2	12,7	9,6	4,5
864 0100.80	M 10	12,5	12,7	11,9	5,5

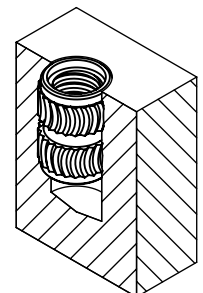
Non binding dimensions, expressed in mm.
For a correct usage of the product it is advisable to carry out some preliminary assembling tests to determine the correct hole diameter.

■ Standard

□ On demand

--- Not manufactured

Material: brass
Finishing: natural
Tolerances: ISO 2768 - m
d1 thread: ISO 6H
Example: threaded insert brass S-Lok bush for polycarbonates,
M5 thread: 863 0050.80



SPECIALINSERT® COMMITS ITSELF TO CONTINUOUSLY IMPROVE ITS PRODUCTS. IT RESERVES THE RIGHT TO CHANGE THEIR TECHNICAL AND STRUCTURAL CHARACTERISTICS WITHOUT PRIOR NOTICE. ALL RIGHTS ARE RESERVED AND THE DUPLICATION, EVEN PARTIAL, OF THESE DOCUMENTS, AS WELL AS ITS DISTRIBUTION TO THIRD PARTIES ARE FORBIDDEN, UNLESS OTHERWISE AND EXPRESSLY AUTHORIZED BY SPECIALINSERT.