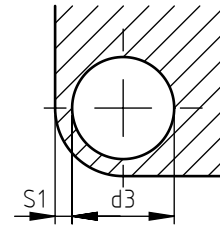
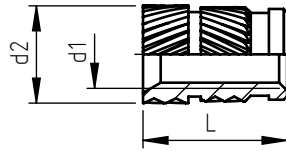
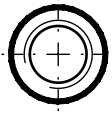


Applications:
on thermoplastic materials
on thermosetting materials

Assembly:
ultrasonic, heat, co-moulding.
co-moulding.

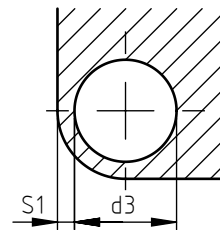
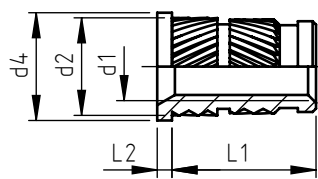
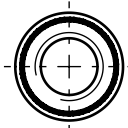
860/861



code	metric thread d1	external diameter d2	total length L	hole diameter d3 +0.1 0	minimum wall thickness S1
860 0 020.80	M 2	3,6	4,0	3,2	2,0
860 0 025.80	M 2,5	4,6	5,8	4,0	2,3
860 0 030.80	M 3	4,6	5,8	4,0	2,3
860 0 035.80	M 3,5	5,4	7,2	4,8	2,5
860 0 040.80	M 4	6,3	8,2	5,6	2,5
860 0 050.80	M 5	7,0	9,5	6,4	2,7
860 0 060.80	M 6	8,6	12,7	8,0	3,0
860 0 080.80	M 8	10,2	12,7	9,6	3,5
860 0 100.80	M 10	12,3	12,7	11,7	4,0

code	total length L
-	-
861 0 025.80	4,0
861 0 030.80	4,0
861 0 035.80	5,8
861 0 040.80	7,2
861 0 050.80	8,2
861 0 060.80	9,5
861 0 080.80	9,5
861 0 100.80	9,5

862



code	metric thread d1	external diameter d2	head diameter d4	head thickness L2	anchorage dimension L1	hole diameter d3 +0.1 0	minimum wall thickness S1
862 0 020.80	M 2	3,6	4,8	0,6	4,0	3,2	2,0
862 0 025.80	M 2,5	4,6	5,6	0,6	5,8	4,0	2,3
862 0 030.80	M 3	4,6	5,6	0,6	5,8	4,0	2,3
862 0 035.80	M 3,5	5,4	6,4	0,8	7,2	4,8	2,5
862 0 040.80	M 4	6,3	7,2	0,8	8,2	5,6	2,5
862 0 050.80	M 5	7,0	8,0	1,0	9,5	6,4	2,7
862 0 060.80	M 6	8,6	9,5	1,3	12,7	8,0	3,0
862 0 080.80	M 8	10,2	11,0	1,3	12,7	9,6	3,5
862 0 100.80	M 10	12,3	14,0	1,3	12,7	11,7	4,0

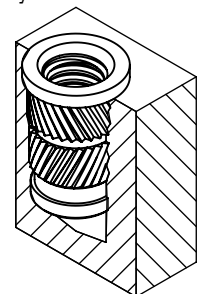
Non binding dimensions, expressed in mm.

For a correct usage of the product it is advisable to carry out some preliminary assembling tests to determine the correct hole diameter.

Standard
 On demand
 Not manufactured

Material: brass
 Finishing: natural
 Tolerances: ISO 2768 - m
 d1 thread: ISO 6H
 Example: brass S-Lok threaded insert with head, M5 thread:

862 0050.80



SPECIALINSERT® COMMITS ITSELF TO CONTINUOUSLY IMPROVE ITS PRODUCTS. IT RESERVES THE RIGHT TO CHANGE THEIR TECHNICAL AND STRUCTURAL CHARACTERISTICS WITHOUT PRIOR NOTICE. ALL RIGHTS ARE RESERVED AND THE DUPLICATION, EVEN PARTIAL, OF THESE DOCUMENTS, AS WELL AS ITS DISTRIBUTION TO THIRD PARTIES ARE FORBIDDEN, UNLESS OTHERWISE AND EXPRESSLY AUTHORIZED BY SPECIALINSERT.