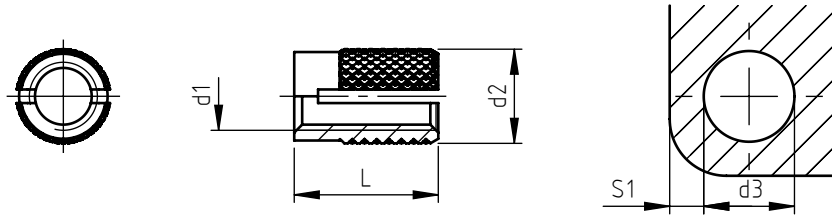


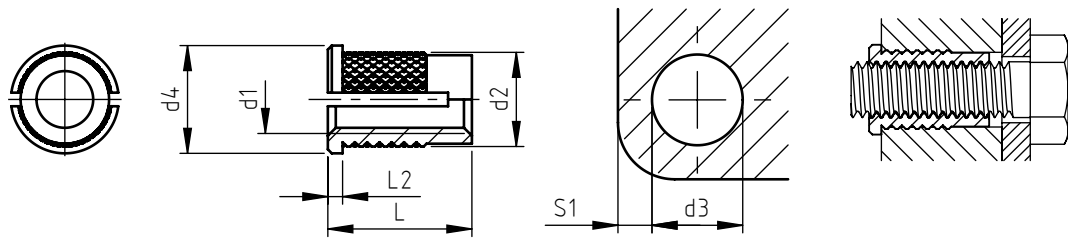
Applications: thermosetting materials.
Assembly: by pressure through expansion anchorage.

841



code	metric thread d1	external diameter d2	total length L	hole diameter d3	minimum wall thickness S1
841 0020.80	M 2	3,45	4,0	3,2 ÷ 3,3	2,4
841 0025.80	M 2,5	4,2	4,8	4,0 ÷ 4,1	3,2
841 0030.80	M 3	4,2	4,8	4,0 ÷ 4,1	3,2
841 0035.80	M 3,5	5,0	6,4	4,7 ÷ 4,8	3,6
841 0040.80	M 4	5,85	8,0	5,5 ÷ 5,6	4,0
841 0050.80	M 5	6,6	9,5	6,3 ÷ 6,4	4,8
841 0060.80	M 6	8,4	12,7	7,9 ÷ 8,0	6,0
841 0080.80	M 8	9,9	12,7	9,5 ÷ 9,6	7,0

842



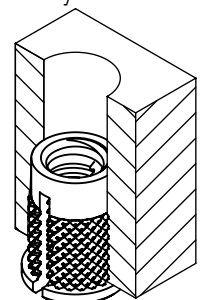
code	metric thread d1	external diameter d2	total length L	head diameter d4	head thickness L2	hole diameter d3	minimum wall thickness S1
842 0020.80	M 2	3,45	4,0	4,8	0,6	3,2 ÷ 3,3	2,4
842 0025.80	M 2,5	4,2	4,8	5,6	0,6	4,0 ÷ 4,1	3,2
842 0030.80	M 3	4,2	4,8	5,6	0,6	4,0 ÷ 4,1	3,2
842 0035.80	M 3,5	5,0	6,4	6,4	0,8	4,7 ÷ 4,8	3,6
842 0040.80	M 4	5,85	8,0	7,2	0,8	5,5 ÷ 5,6	4,0
842 0050.80	M 5	6,6	9,5	8,0	1,0	6,3 ÷ 6,4	4,8
842 0060.80	M 6	8,4	12,7	9,5	1,3	7,9 ÷ 8,0	6,0
842 0080.80	M 8	9,9	12,7	11,0	1,3	9,5 ÷ 9,6	7,0

Non binding dimensions, expressed in mm.

For a correct usage of the product it is advisable to carry out some preliminary assembling tests to determine the correct hole diameter.

Standard
 On demand
 Not manufactured

Material: brass
 Finishing: natural
 Tolerances: ISO 2768 - m
 d1 thread: ISO 6H
 Example: brass B-Lok threaded insert knurled, with head,
 M5 thread: 842 0050.80



Headquarter and Export department:
 Via Monfalcone 144 - 10136 - Turin - IT - Tel. +39.011.700301 - Fax +39.011.702947
 Milan branch:
 Via E. Cialdini 37 - 20161 - Milan - IT - Tel. +39.02.646.8476 - Fax +39.02.662.00275
 Production and purchase departments:
 Via E. Pavanello 1 - 30030 - Maerne di Martellago (Venice) - IT - Tel. +39.041.503.0100
 Fax +39.041.503.0110