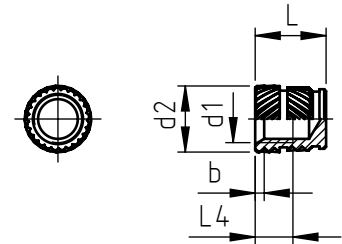
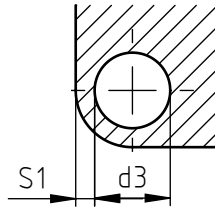
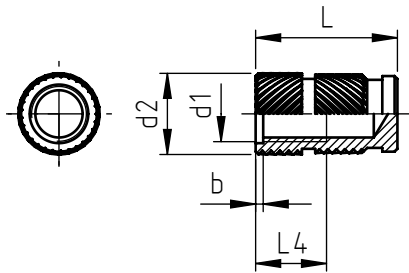


Applications:
on thermoplastic materials
on thermosetting materials

Assembly:
ultrasonic, heat, co-moulding.
co-moulding.



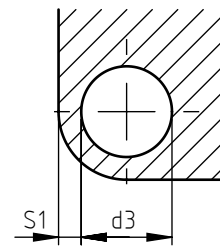
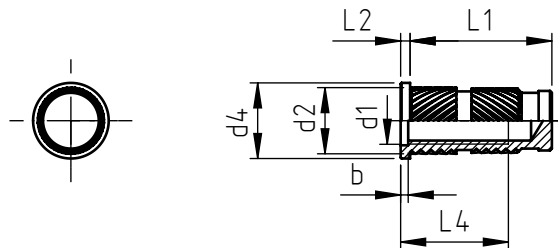
60_/C

61_/C

d1 and d2 see 60_/C

code	metric thread d1	opening depth b	min. thread length L4	external diameter d2	total length L	hole diameter d3	minimum wall thickness S1
603/C	M 3	0,8	5	4,6	8,8	4,0	2,3
604/CC	M 4	0,8	4,5	6,3	10,2	5,6	2,5
604/C	M 4	0,8	7,5	6,3	12,2	5,6	2,5
605/C	M 5	0,8	8,5	7,0	15	6,4	2,7
606/C	M 6	0,8	8,5	8,6	15	8,0	3,0
608/C	M 8	1,0	7	10,2	15	9,6	3,5

code	opening depth b	thread depth L4	total length L
613/C	0,5	2,0	4,5
n.a.	n.a.	n.a.	n.a.
614/C	0,8	2,5	6,0
615/C	1,0	4,0	7,5
616/C	1,2	4,5	9,0
618/C	1,4	6	12



62_/C

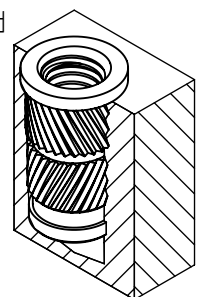
code	metric thread d1	opening depth b	min. thread length L4	external diameter d2	head diameter d4	head thickness L2	anchorage dimension L1	hole diameter d3	minimum wall thickness S1
623/C	M 3	0,8	6	4,6	5,6	0,6	8,8	4,0	2,3
624/C	M 4	0,9	9	6,3	7,2	0,8	12,2	5,6	2,5
625/C	M 5	0,8	9,5	7,0	8,0	1,0	15	6,4	2,7
626/C	M 6	0,8	11,5	8,6	9,5	1,3	15	8,0	3,0
628/C	M 8	0,9	10,5	10,2	11,0	1,3	15	9,6	3,5

Non binding dimensions, expressed in mm.

For a correct usage of the product it is advisable to carry out some preliminary assembling tests to determine the correct hole diameter.

Standard
 On demand
 Not manufactured

Material: brass
 Finishing: natural
 Tolerances: ISO 2768 - m
 Threading d1: ISO 6H
 Example: closed insert S-Lok with head, M5 thread, brass: 625/C



Headquarter and Export department:
 Via Monfalcone 144 - 10136 - Torino - IT - Tel. +39.011.700301 - Fax +39.011.702947
 Milan branch:
 Via E. Cialdini 37 - 20126 - Milano - IT - Tel. +39.02.646.8476 - Fax +39.02.662.00275
 Production and purchase departments:
 Via E. Pavanello 1 - 30030 - Maerne di Martellago (Venezia) - IT - Tel. +39.041.503.0100
 Fax +39.041.503.0110